

TICSA
Telecommunications

 **TICSA GROUP**

 **MRO**
IBEROAMERICA

 **MRO**
IBEROAMERICA
TRAINING CENTER



Heavy Maintenance / Engineering / Paint Services

FAA & AFAC Approved Repair station

Committed to safety, quality and operational excellence

We are a fully certified aircraft maintenance organization providing heavy maintenance, engineering, structural repair and paint services to commercial, cargo, military forces and special mission operators.

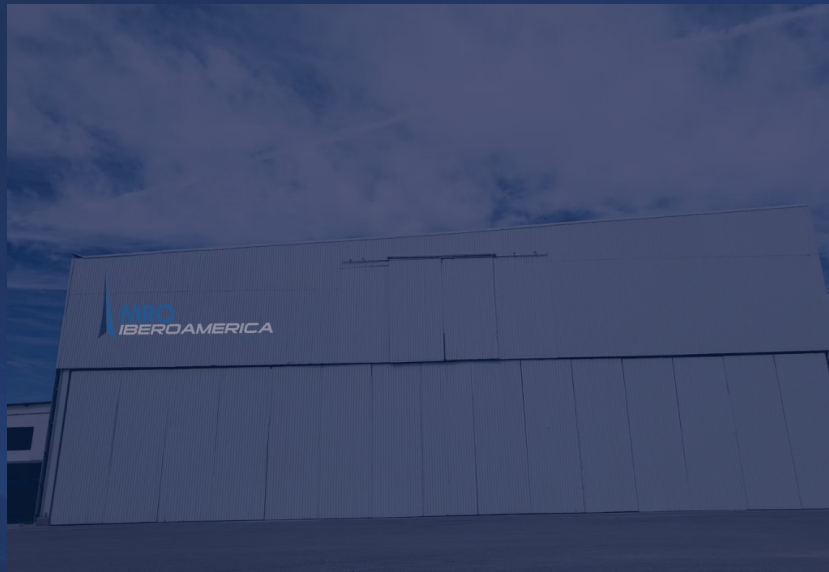
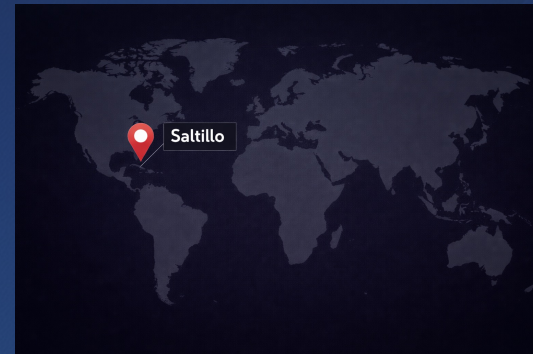
Strategically located in Northeast Mexico, the company operates under FAA and AFAC approvals, delivering maintenance solutions aligned with international safety, quality and regulatory standards.



- Heavy Maintenance and C - Checks
- Structural Repairs & Modifications
- Full Aircraft Paint Services
- Engineering & Technical Support
- Special Projects & Government Programs



Strategic Location



Located at Saltillo International Airport (SLW), MRO Iberoamerica benefits from a strategic geographic position, competitive operating costs and direct access to major logistics corridors, enabling efficient aircraft induction, reduced downtime and optimized maintenance planning.

HANGAR 52

Plan de Guadalupe International Airport
Carretera Saltillo - Monterrey Km. 13.5
Ramos Arizpe, Coah.
MEXICO

- Northeast Mexico strategic corridor
- Two (2) Narrow body bays
- Five (5) Regional Aircraft bays
- Competitive labor & operating costs
- Rapid aircraft access & logistics
- Ideal location for heavy maintenance and paint programs



All maintenance activities are performed in strict compliance with 14 CFR Part 145, AFAC regulations and international airworthiness standards, ensuring full regulatory alignment and operational reliability.



AFAC MEXICO - 464



FAA USA - 3R9Y640D



ANAC ARGENTINA - 1B 671



2-REG -145.538
Cayman Islands



MRO Iberoamerica provides certified maintenance services for commercial narrow-body, regional and military aircraft, supporting major global manufacturers and multiple fleet configurations.



 AIRBUS

 BOEING

 EMBRAER

 BOEING

A 319 CEO
 A 320 CEO
 A 321 CEO
 A 319 NEO
 A 320 NEO
 A 321 NEO

B 737 200
 B 737 CLASSIC
 B 737 NG
 B 737 MAX 8 - 9

E-JET 170
 E-JET 175
 E-JET 190
 E-JET 195
 E-JET 195 E2

B 727 100
 B 727 200





← **EMBRAER**

ERJ 135
ERJ 145



GULFSTREAM

G 200 SERIES
G 300 SERIES



FAIRCHILD

DORNIER 328 - 300



MHI_{RJ}

CL-600-2B19
CRJ 100
CRJ 200





HAWKER

HAWKER 700
HAWKER 800
HAWKER 900



Beechcraft

KING AIR 300 SERIES
KING AIR C90 SERIES



DASSAULT

FALCON 20 SERIES



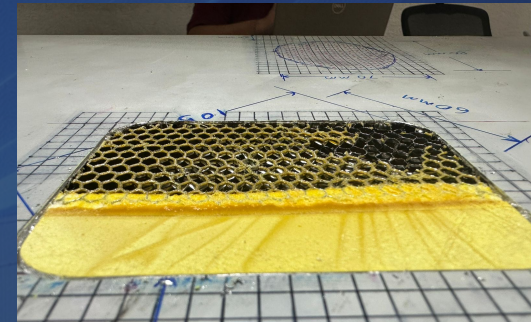
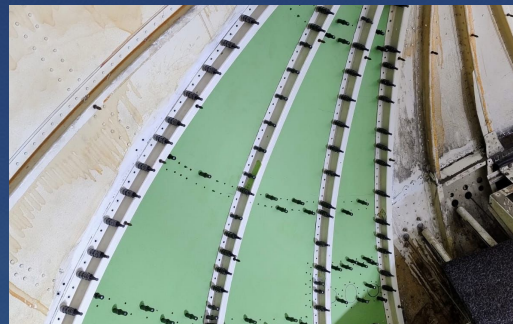
The company delivers comprehensive heavy maintenance solutions through structured maintenance programs, advanced planning and strict regulatory compliance.

- C-Check Maintenance Programs
- Corrosion Prevention & Control Program (CPCP)
- Aging Aircraft Inspections
- Scheduled Inspections & Discrepancy Rectification
- AD, SB and STC Execution
- Reliability-driven Maintenance Planning

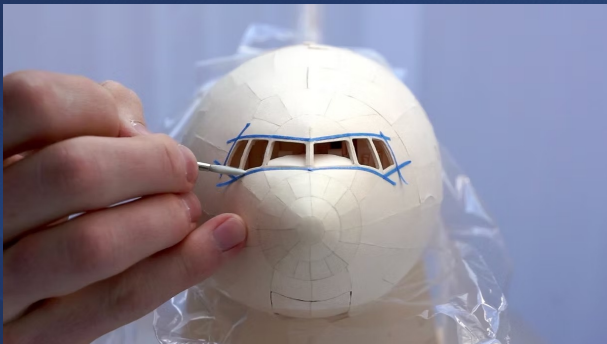


MRO Iberoamerica operates a fully equipped structural repair capability, supported by engineering and experienced technical personnel, executing repairs and modifications aligned with OEM and regulatory standards.

- Sheet Metal & Structural Repairs
- SRM & Engineering Order Repairs
- Structural Modifications
- Composite Repairs
- Government & Military Projects
- Special Mission Aircraft Programs



Our dedicated paint facilities provide full aircraft painting solutions, delivering high-quality finishes under controlled environmental conditions and industry-approved processes.

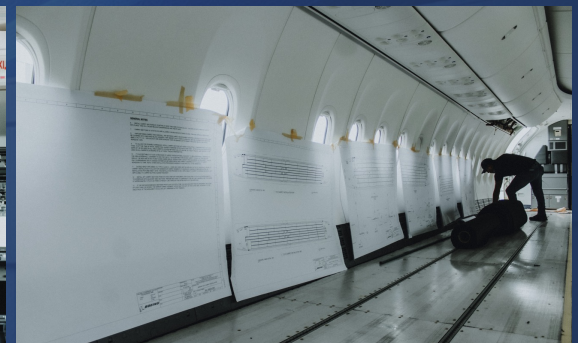


- Full Aircraft Strip & Paint
- Scuff & Paint Programs
- Livery Change & Branding
- Touch-ups & Localized Repairs
- Interior Paint Works
- Corrosion Protection Coatings



We provide comprehensive cabin retrofit and interior modification services, improving passenger experience, cabin aesthetics and aircraft value.

- Cabin Retrofit Programs
- Interior Refurbishment
- Seat & Monument Installation
- Floor Panels & Interior Structures
- Livery & Interior Branding
- Compliance with certification standards



Our engineering team delivers integrated technical solutions, ensuring maintenance programs remain fully aligned with regulatory, operational and reliability objectives.



- Aircraft Records Review
- Maintenance Program Control
- Reliability Program Management
- AD & SB Control
- Technical Records Audits
- Engineering Orders Design
- Repair Design



We proudly serve national and international operators, including passenger, cargo, leasing and special mission organizations.

- Commercial Airlines
- Cargo Operators
- Aircraft Lessors
- Government & Military Organizations

Some of our customers





Initial / Recurrent / Supplementary and Formation Training

AFAC Approved Training Center

Building technical excellence through training, technology and safety culture.

MRO Iberoamérica operates an approved Training and Technical Development Center, providing initial and recurrent training programs aligned with international regulatory standards and focused on operational safety, technical competence and regulatory compliance.

This integrated training platform strengthens workforce capability, ensures regulatory alignment and enhances operational reliability across all maintenance activities.

- AFAC Approved Technical Training Organization
- Initial & Recurrent Programs
- Aircraft Type Training
- Regulatory Compliance Focus
- Safety & Human Factors Culture
- Continuous Competency Development
- AFAC Aircraft Maintenance Mechanic A&P Career
- AFAC Aircraft Maintenance Mechanic SM Career
- AFAC Aircraft Maintenance Mechanic AV Career



The Best Team forming the best people



Initial / Recurrent for:



A 319 CEO
A 320 CEO
A 321 CEO
A 319 NEO
A 320 NEO
A 321 NEO

B 737 200
B 737 CLASSIC
B 737 NG
B 737 MAX 8 - 9

ERJ 145
E-JET 170
E-JET 175
E-JET 190
E-JET 195
E-JET 195 E2

B 727 100
B 727 200

Supplemental Training:

- Human Factors
- Regulatory Training
- SMS
- Differences Training
- Specialized Technical Courses
- Drawings Interpretation

Technical Careers:

- AFAC Aircraft Maintenance Mechanic A&P
- AFAC Aircraft Maintenance Mechanic CAT II Structures





TICSA GROUP



MRO
IBEROAMERICA

TICSA
Telecommunications



MRO
IBEROAMERICA
TRAINING CENTER

Powered by technology. Driven by quality. Committed to safety. Delivering aircraft on time.

mroiberoamerica.com